

# METAL CARRIAGE COMPARISONS

## STEEN V's COMPETITION

### STEEN CANNONS



Our Elevating Screw Box is Solid Brass and polished to a mirror finish and bolted on using STAINLESS STEEL bolts. Our competition's screw box is cast into the carriage and is painted.



Our Cheeks are fitted into the axle like the original. Our competition's cheeks are fitted over the axle. Notice the roughness of the finish with the casting seam still visible on the Axle. All of our castings are ground and sanded smooth.



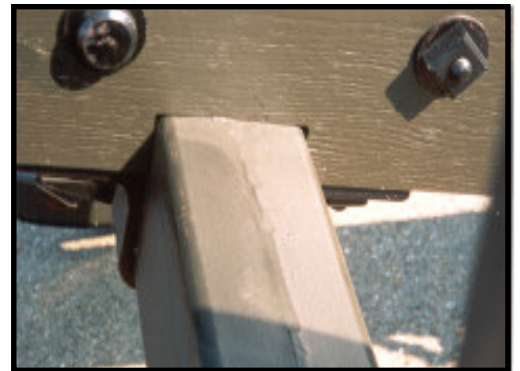
Notice the smoothness of our trails.

### OTHER DIFFERENCES

Linstock Socket, Prolonge hooks, D-Rings & Eyelett Screws are drilled and taped and fastened with STAINLESS STEEL Screws. Our competition uses pop rivets.

We use conventional paint methods that can be re-applied on the field. Our competition uses a powder coated system that will require returning the carriage back to the manufacturer for repainting.

### COMPETITION



Pictured is a No. 3 Cheek on a No. 1 Trail, & Axle. (Notice the Rondells)

Notice the smoothness of our Trunnion Plates. Our Competition still have casting seam visible



Steen Cannons

Competition